



CURVE

Adjustable Bed Manual

Restwell's Curve Adjustable bed extends your resting and sleeping preferences to another level. With Multiple adjustable configurations, your body will have endless possibilities of comfort.

Available Sizes & Specifications:

Twin XL: 38" x 80" (96.5 x 203 cm)

Queen: 60" x 80" (152 x 203 cm)

Control Operated



Save your preferences and adjust your bed to different positions while you rest in your bed



Multiple Adjustable Positions

Conture your mattress to the curves of your body and prevent straining your neck or shoulders while you relax.



Content Index

Safety Precautions.....	3
Included Items & Parts.....	3
Assembly Instructions.....	4
Remote Control	5
Button Functions	5
Memory Setting	5
Power Outage	6
Troubleshooting	6
Warranty	6

Do you have questions about your Adjustable Base? or have troubles putting it together?

Contact us, we are here to help you with an inquiry you may have. Talk to one of our support representatives today.

Hour of Operation: Monday- Friday from 9 am - 5 pm (PST)



Safety Precautions

Please read all directions before using the bed and retain this guide for reference.

- Input voltage: AC 100-240V. 50/60HZ, output: DC29V 2.0A.
- Unplug the bed before cleaning it.
- Keep the product wire, power supply, and control box away from heat.
- **Do not** use the bed in a humid environment. The connector part of the wire and the gap between the motor and the control box cannot be exposed to liquid or high humidity
- Never operate the bed if it has a damaged cord or plug, or is not working properly.
- Unplug the power cord and remove the remote control battery when the bed is not being used for a prolonged period of time.
- Consult your physician if you have any health questions regarding the use of this product.
- **Do not** let children play with or operate the bed.
- Do not allow children or pets underneath the bed.

Included Items & Parts



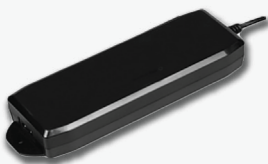
Bed Platform X1



Mattress Rail X1



Legs X4



Power Supply X1



Power Cable X1



Remote Control X1

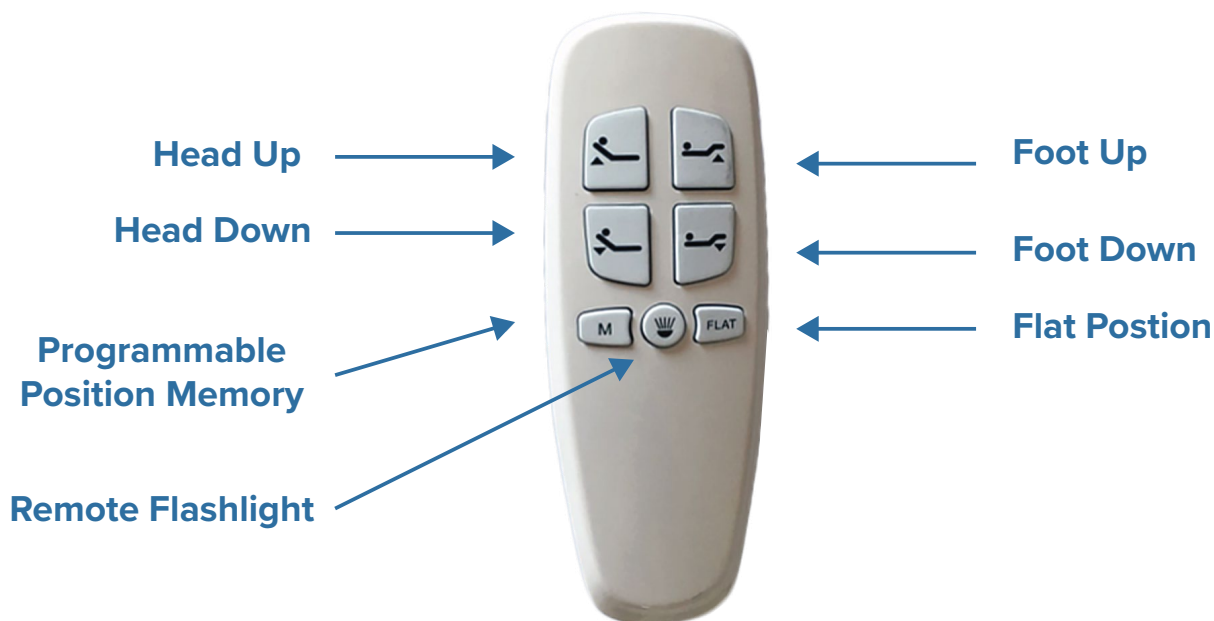


Assembly Instructions

<p>1</p> <p>Lay the carton flat on the floor and carefully cut it open.</p>	<p>2</p> <p>Lift the carton so that the open side faces down and slide it up and off the bed. Place the bed upside-down flat on the floor</p>	<p>3</p> <p>Remove and discard the plastic bag. Put together the two pieces of the bed and align them flat on the floor.</p>	<p>4</p> <p>Cut the zip ties, take out all the part boxes and the mattress rail, and check that you have all the necessary parts according to the parts list.</p>
<p>5</p> <p>For leg assembly push the screw through the triangular brace. Screw in the leg and tighten.</p>		<p>6</p> <p>Connect the 01-connector from the controller to the 01-plug of the power supply.</p>	
<p>7</p> <p>Connect the 8-wire plug of the power cable to the other jack on the switch's power supply. Connect the power cable to your nearby power outlet.</p>		<p>8</p> <p>Insert batteries into the remote control. Press the first circled button. If the motor begins to run, unplug the power supply and turn the bed over to its right side-up position. If the motor does not run, it needs to re-match its code.</p>	
<p>9</p> <p>Insert the mattress rail at the foot of the bed. The bed is now ready for use.</p>		<p>Matching code: Press the two buttons in the circles shown and at the same time press the little button on the side of the control box until you hear the 'didi' sound.</p>	
<p>10</p> <p>The bed is now ready for use.</p> 			



Remote Control Functions



Button Functions

	Press and hold to raise the backrest. Let go when the desired position is reached.		Click to set a user-defined position.
	Press and hold to lower the backrest. Let go when the desired position is reached.		Click to turn the LED flashlight on top of the remote on and off.
	Press and hold to raise the footrest. Let go when the desired position is reached.		Click to flatten the bed.
	Press and hold to lower the footrest. Let go when the desired position is reached.		

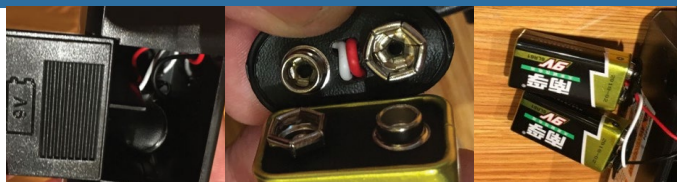
Memory Setting

	1. Press the FLAT button to flatten the bed.		4. Chime indicates the setting has been successfully programmed.
	2. Adjust the bed to your preferred position.		5. Resume back to programmed position by pressing the memory button at any time.
	3. Press and hold button M and let go after you hear the “didi” chime sound.		

Power Outage

Press and hold to raise the backrest. Let go when the desired position is reached.

1. Open the power box and install the appropriate battery.



2. Use the remote to return the bed to a flat sleeping position until power returns.

3. Once power returns replace the battery if needed.

Troubleshooting

1. Press any button on the remote control to see whether the blue backlight is bright. If it's dim or does not light, check the battery.

3. Check for loose wires or connectors.

2. Check the green power indicator light on the power supply. If it's not lit, check the power outlet.

4. Check if the adjustable beds assembled according to the above steps.

Warranty

Curve warrants faulty workmanship or materials, subject to the limitations that follow:

Year 1: Full parts and labour coverage for the entire unit (control box, remote control, motor and metal frame).

Year 2: Full parts coverage for the motor and control box.

In no instance will this warranty be valid if the bed is misused or damaged by the purchaser or subjected to weight in excess of 272 kg (600 lbs).

This warranty is limited to the **original purchaser**.

Proof of purchase must be in the form of a verifiable copy of the original invoice.

Please retain this manual and your original invoice for future reference and documentation.