

RESTWELL®

SLEEP PRODUCTS



SILHOUETTE

Premium Adjustable Base With Massage | 0161

Restwell's **Silhouette adjustable base** improves blood circulation and extends your resting and sleeping options to another level. Endless possibilities of comfort and relaxation.

Features	Benefits
<ul style="list-style-type: none"> • Two Motor Massage Function • Wireless Remote • Two Personal Memory Setting • Head & Foot Controls • Zero-G, TV, Anti Snore & Flat Preset • Remote Flashlight • Under-Bed LED Light • USB Ports • 6 Leg Settings • Storage Pockets 	<ul style="list-style-type: none"> • Courier Friendly Packaging & Size for Shipping • Silent Drive Motors • Power Outage Protection • Zero Standby Power System • Gravity Release • Okin Motors

Sizes	Dimensions	Weight	Max Weight Capacity
Twin XL	38" x 80" (96.5 x 203 cm)	124 lbs / 56 kg	700 lbs / 320 kg
Queen	60" x 80" (152 x 203 cm)	167 lbs / 75 kg	700 lbs / 320 kg

Got Questions? Talk to One of Us at: +1 604.576.2339 | restwell.com



RESTWELL SILHOUETTE

PREMIER PLUS ADJUSTABLE BASE WITH MASSAGE

OWNER'S MANUAL

Table of Contents

Safety Precautions.....	1-2
Parts List.....	3
Queen Base Overview	4
Control Box Overview	5
Installation Guide.....	6
Wireless Remote	7
Wireless Remote Pairing.....	8
Troubleshooting.....	9
Emergency Power Supply Instructions	10
App Instructions	12
Warranty Information.....	13

Safety Precautions



Notice – Important Safety Disclaimers

For your safety, please read all instructions carefully before using this adjustable base. Save these instructions for future reference.

Attention:

This bed is intended to be used only as described in this manual. Keep the base unplugged before assembly. After assembly, please ensure you connect the bed properly to the power supply to avoid an electric shock or fire. Before cleaning always ensure that the bed is in a flat position with all motors turned off and disconnected from the power source. Always keep the power cord away from heated surfaces.

If the power cord or plug becomes damaged, or if the bed is wet or not working properly, stop using the bed and contact customer service. Do not use any accessories/attachments that are not recommended by the manufacturer.

Close supervision is required when the bed is used by or near children, convalescents or disabled persons.

Electrical Safety:

To protect electrical components, the bed should be plugged into a surge protected power supply cord or receptacle.

Warranty Warning:

The control box, motors, and remote (except battery compartments) should not be tampered with. Opening or tampering with these components will void the warranty.

In-Home Use Only:

This bed is designed exclusively for in-home use. It is not designed as a hospital bed, or to meet hospital standards. Do not use this bed with tent type oxygen therapy equipment or near explosive gases.

Safety Precautions

Medical Device Notice:

This bed contains Neodymium magnets, which may interfere with magnetic fields of devices such as pacemakers, ICD'S etc. Some pacemakers may falsely interpret massage vibrations as movement or exercise. The owner of such medical devices should consult with their physician before using this product.

Children and Pets:

This product is designed to be used by an adult. Do not allow children to operate the bed without adult supervision. Immediately dispose of all packing materials as they can pose a smothering risk to children and pets. Injury can occur if children or pets are permitted to play on or under the bed.

Weight Limits:

This product is not rated to support weight exceeding 320 kgs (700 lbs.). This includes bed partners, the mattress and bedding. The bed will structurally support this weight, provided it is evenly distributed. The bed is not designed to support or lift 320 kgs (700 lbs.) in the head or foot sections alone. Exceeding this weight restriction could damage the bed and/or cause injury and will void the warranty.

Motors:

All motors emit a noticeable tone during operation. The volume of this tone is often enhanced in home settings, depending on flooring and acoustics.

Lift motors are not designed to be operated for more than 2 minutes continuously every 18 minutes. Exceeding this will shorten the life of the motor and may void the warranty.

To protect overheating of massage motors, they automatically turn off after 30 minutes of use. Failure to give these motors a 30-minute rest after they turn off, may void the warranty.

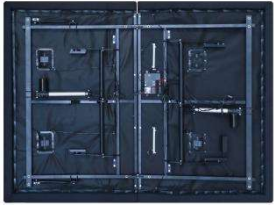





FCC Compliance:

FCC Compliance: This device complies with part 15 of the FCC Rules. Operation is subject to the following two conditions: (1) This device may not cause harmful interference, and (2) this device must accept any interference received, including interference that may cause undesired operation. To comply with the FCC RF exposure requirements, no change to the antenna or the device is permitted. Any change to the antenna or the device could result in the device exceeding the RF exposure requirement and void user's right to operate the device.

Radio Frequency: 2.4 GHz

Parts List

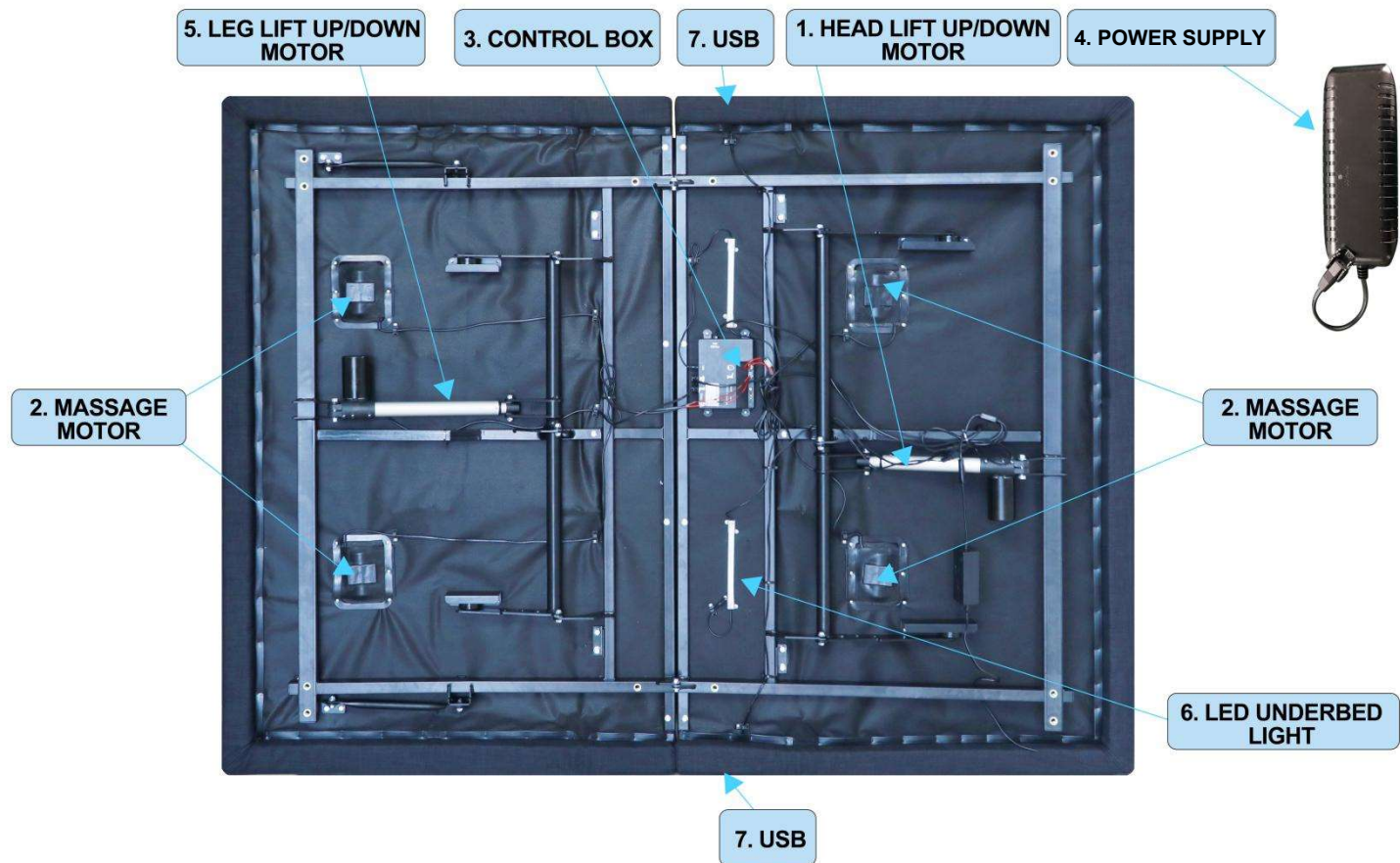
Please ensure you have received all the parts listed below before discarding packing materials.

A 	B 	C 		Part Name	Quantity
			A	Adjustable Bed Base	1
			B	Wireless Remote & Batteries	1
			C	Legs	6
D 	E 	F 			
			D	Mattress Retainer Bar	1
			E	Power Supply Box	1
			F	Power Cord	1

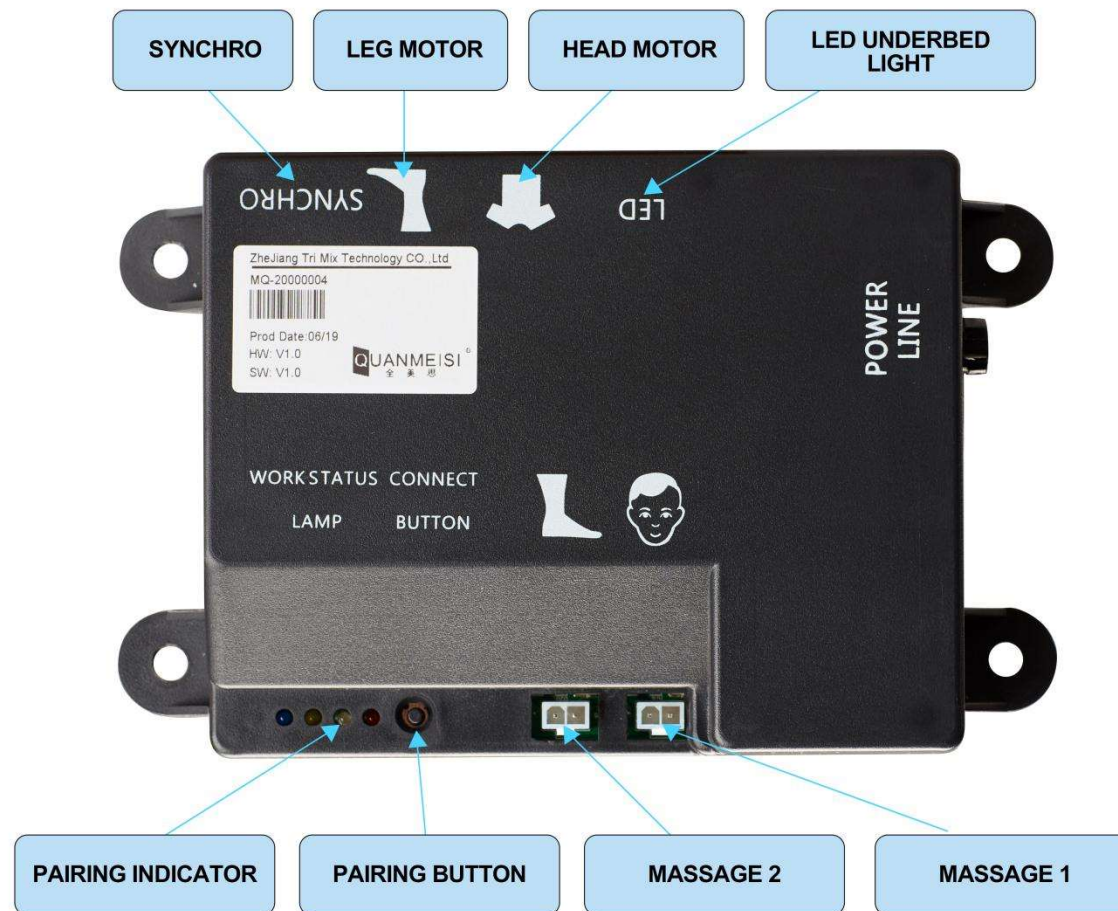
All parts shown are for reference only and may not resemble parts for this adjustable bed.

Queen Base Overview

1	Head Lift Up/Down Motor	2	Massage Motors
3	Control Box	4	Power Supply
5	Leg Lift Up/Down Motor	6	LED Underbed Light
7	USB Ports		



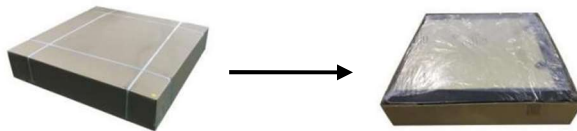
Control Box Overview



Installation Guide

Step 1: Remove packing materials

- Put the bed in its desired location with the bottom of the cardboard box facing up. Remove the top of the box. Take out all the packing materials and put them aside. Make sure you keep sharp objects that might puncture the bed out of the way.



Step 2: Remove the base from the box

- Install the 6 legs. Each leg comes with 7 pieces (2-1", 4-2", and 1-3". You can adjust your base height anywhere from 5" to 13". Keeping the base facing upward, tighten the feet securely by hand.
- If you purchased headboard brackets, now is the time to install these.



Step 3: Turn the bed over carefully

- Along with a friend, carefully turn over the bed and remove the rest of the cardboard box. Do not lay the bed on its side to prevent damage to the USB ports, fabric, or legs.

Step 4: Connect the power supply box

- To prevent damage to the Power Supply Box (E) please ensure that it's not obstructed in any way by the adjustable base or headboard.



- Plug the power cord into the Power Supply Box as shown.



Wireless Remote



Wireless Remote Pairing

Step 1:

Push in on the bottom of the remote to release the battery cartridge and install three AAA batteries into the remote battery compartment. Push firmly to close.

Step 2:

Plug the base into a power source and press the Pairing Button on the control box until the Pairing Indicator Lamp is flashing (white third light).



Step 3:

Press “SWITCH” until the backlit LED light on the remote flashes. Then release “SWITCH” and press “HEAD UP”. Don’t release “HEAD UP” until the backlit LED light is lit, and the remote is paired.

Second, Press “HEAD UP”. Don’t release until the backlit LED light is lit, and the remote is paired.

First, Press the “SWITCH” button on the remote until the backlit LED light flashes and then release.



When the Pairing Program Button on the control box and the backlight LED on the remote stop flashing, and the buzzer on the control box has a “DI” sound, pairing is completed. If the pairing fails, repeat the process again.

If Syncing is required, please call 1-888-665-1112 for instruction

Troubleshooting

If you have an issue with your adjustable bed, please read the following for a possible cure.

If there appears to be no fix, please contact RESTWELL Customer Service at 1-888-665-1112

Symptom	Malfunction	Solution
Adjustable bed function does not work	No power input	Check the connection of the power cord
	Power cord or control line is damaged	Replace the power cord or control line
	Wireless remote battery is dead	Replace the wireless remote battery
	Wireless remote isn't working	Replace the wireless remote
	One of the motors is not working	Replace the motor
Excessive motor noise	Motor wear or damage	Replace the motor
The adjustable bed function runs slow	The adjustable bed is overloaded	Reduce the weight of the load on the bed
Unable to pair	Pairing error	Check to see if the pairing light on the control box is blinking. Follow the pairing instructions if it still cannot be paired, unplug, plugin and try it again.
The bed does not respond after sending it an action command	The control box most likely did not receive the command	After confirming that the wireless remote button is pressed, a green or yellow light should be flashing on the control box. If it's not, please un-plug the bed, plug it back in, and try it again.
The red work light flashes on the control box. After sending the action command, the corresponding part will stop Automatically after moving	The control box detected a fault	Set to "FLAT" and contact us.
Nothing seems to be working	Electronic components may require resetting	Unplug the bed for an hour and then plug it back in. If this fails to solve the issue, please call RESTWELL customer service at 1-888-665-1112

Emergency Power Supply Instruction

The emergency power supply can only be used to make the bed flat when normal power is off.
When using emergency power supply please reduce the weight on the bed as much as possible.

Step 1 :

- Open the Power Supply Box.



Step 2:

- Insert 2 9V batteries.



Step 3:

- Close the power supply box by pushing the parts together.



Step 4:

- Link to the power supply box.



Step 5:

- Once the emergency power supply is linked you can use the wireless remote control or App to make the bed go flat.

Step 6:

- After use, please take out the battery in time and put it in a place suitable for storing the battery. Do not throw the battery away to pollute the environment

App Instructions

This adjustable bed can be operated from an android or your personal IOS devise.

Android System

- Find the 'Google play' and open it to search for the App called 'Tri-Mix adjustable bed' and download it.

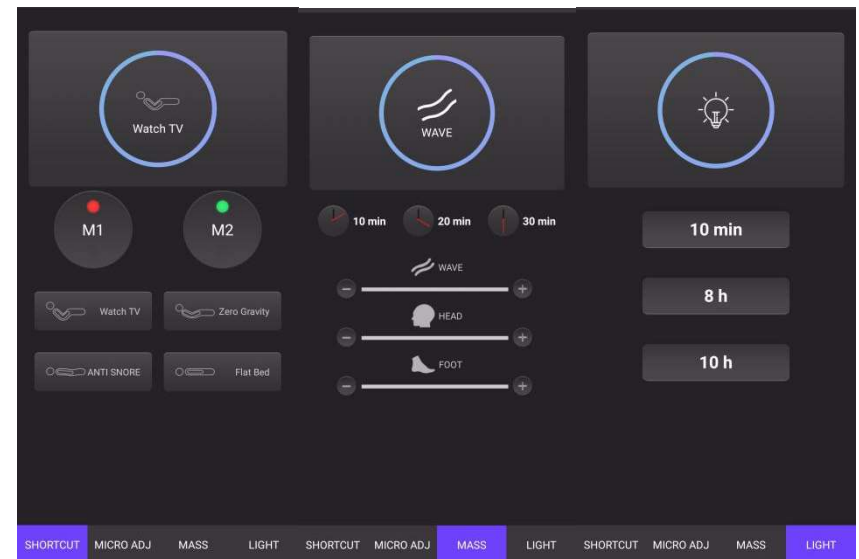
IOS System

- First step: Find the 'Apple store' and open it to search for the App called 'Tri-Mix adjustable bed' and download it.

Functions of app

1. Adjust the bed in the app.
2. The intensity and timing of massage can be set in the app.
3. Timing setting of LED under bed light.

Please open the Bluetooth of mobile phone and connect the control box of adjustable bed, the Bluetooth name starts with 'QMS'.



Warranty Information

RESTWELL warrants faulty workmanship or materials, subject to the limitations that follow:

2-Year Full Warranty (Not including the wireless remote control, wireless remote control only 1 year warranty)

Manufacturer warrants against defects in materials or workmanship for a period of two years from the date of purchase to the original Purchaser. The manufacturer will repair or replace, at no cost to the original Purchaser, any warranted part(s) found to be defective by the manufacturer. Service, installation, and transportation costs incurred with the repair or replacement of any part found to be defective are included in this coverage.

5-Year Warranty on Parts

Manufacturer warrants against defective electrical/mechanical part(s) for a period of 5 years from the date of purchase to the original Purchaser. The manufacturer will repair or replace, at no cost to the original Purchaser, any warranted part(s) found to be defective by the manufacturer. The manufacturer's liability shall be limited to the replacement of the defective part(s) ONLY. Service, installation, and transportation costs are NOT included in this coverage.

10-Year Limited Warranty on Frame

Manufacturer warrants against defective mechanical base part(s) for a period of 10 years from the date of purchase to the original Purchaser. The manufacturer will repair or replace, at no cost to the original Purchaser, any warranted part(s) found to be defective by the manufacturer. The 10-year warranty coverages excludes the cover, shroud, platform, legs, actuator lift motors, massage motors, control box, remote controls, power supply, and all power supply cords. The manufacturer's liability shall be limited to the replacement of the defective part(s) ONLY. Service, installation, and transportation costs are NOT included in this coverage.

This warranty is limited to the original purchaser and will be null and void if the bed is misused, damaged, or subjected to weight in excess of 320 kg (700 lbs.). Proof of purchase must be in the form of a verifiable copy of the original invoice. Please retain this manual and your original invoice for future reference and documentation.